

THC Consumable Products



Chief Steve Dye

Allen Police Department

THE BASICS

- HEMP
 - Grown specifically for industrial uses
 - **Contains very low levels of THC (less than 0.3%)**
 - Does not produce psychoactive effects
- CBD
 - Non-psychoactive compound found in cannabis plants
 - **Does not produce a "high"**
 - Used in various wellness products and does not affect mental clarity
- THC
 - Cannabinoid found in cannabis plants
 - **Psychoactive and produces a "high"**
 - 0.3% THC = 3 mg of THC (per 1 gram of dry weight)
 - **1 gummy that weighs 3.2 grams = 9.6 mg of THC**
- MARIJUANA
 - Contains higher levels of THC than hemp
 - Consumed for psychoactive effects and medicinal benefits

HISTORY

- **2018 Farm Bill** - Legalized hemp and allows up to 0.3% **Delta-9 THC** by dry weight
- **2019** - Texas Legislature authorized the commercialization of hemp products to help Texas farmers (2024 - 182 acres of 125 million)
- **Unintended consequence** - has evolved into an unregulated industry now selling high-potency forms of consumable Tetrahydrocannabinol (THC) products

PUBLIC SAFETY CONCERNS

- Unregulated industry with unknown potency in retail products
- No established guidelines on how much THC is safe to consume
- Fast and easy-to-use delivery systems
- Cannabinoid variants are being chemically modified from industrial hemp then labeled as edibles
- Often targeted at youth consumers
- Significant research on adverse health effects particularly with use at younger ages (psychosis, schizophrenia, bipolar disorder, depression, anxiety, heart attacks, lower IQ)
- As cannabis becomes more available in the environment for adults, its access also increases for children and young adults
- Higher THC concentrations make it more likely a person develops an addiction
- *Cannabis Use Disorder* more likely to develop in individuals who begin using the drug before age 18

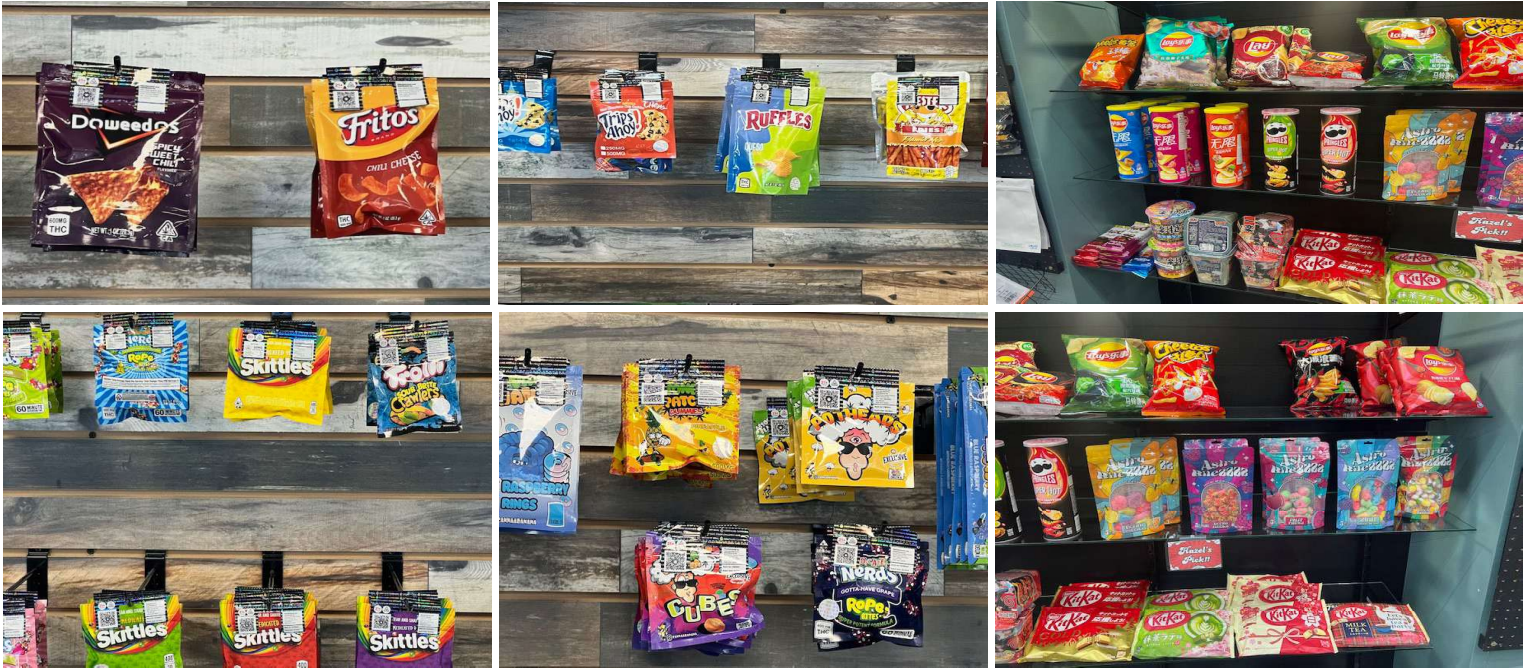
LAW ENFORCEMENT CHALLENGES

- Loopholes in current law allow THC compounds to be sold as “hemp”
- Manufacturers argue that Delta-8 THC variant products are “hemp products” and not “cannabis products” therefore making them legal
- Mislabeling can lead to accidental intoxications, overdoses, and addiction
- Police canines cannot distinguish between THC consumables and hemp
- Labels often do not reflect the level of actual THC inside the package
- THC intoxication levels are very difficult to detect
- Manufactured and imported from out-of-state
- Storage
- **Inadequate resources for regulation or testing**

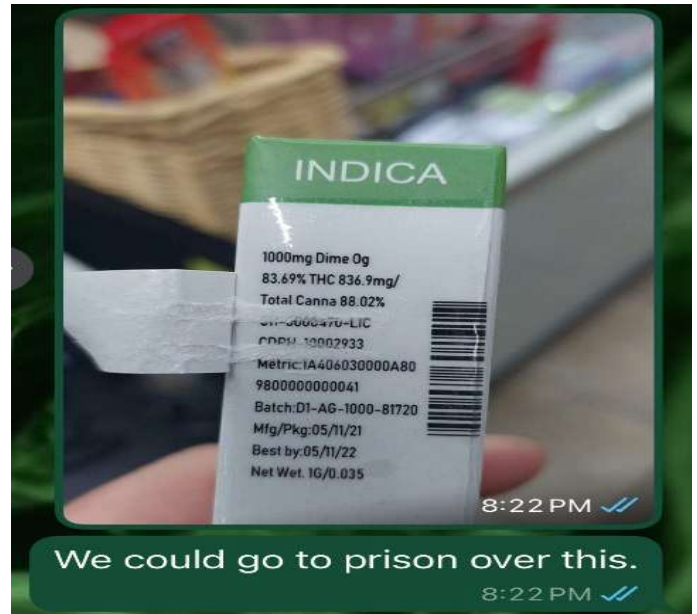
ALLEN PD INVESTIGATIONS

- 24 THC shops in a city of 27 square miles
- Nine (9) shops were investigated
- Multiple rounds of undercover buys
- Nine search and seizure warrants executed
- Results:
 - Five arrests
 - Numerous THC-containing products seized and tested
 - **THC concentration levels ranged from 7% to 78%, with an average of 29%**
- Led to search warrants at three warehouses
- Joint investigation ongoing with the DEA

PRODUCT PHOTOS



PACKAGING



We could go to prison over this.

2025 LEGISLATION

- **Ban on THC consumables**
 - Voted out of both House and Senate in Regular Session
 - Vetoed by Governor
- **SB2024**
 - Prohibits the marketing, advertising, selling (**not possession**) of e-cigarette products containing cannabinoids, alcohol, Kratom, Kava, mushrooms, Tianeptine, and
 - Electronic devices likely to appeal to minors (school or office supplies, toys, cosmetics, smartphones, smartwatches, headphones, backpacks, clothing), and
 - Packaging or marketing that appeals to minors (cartoon characters, candy-like imagery, celebrity likenesses, or branding mimicking children's products)
 - Products manufactured in China or countries designated as foreign adversaries
- **HB46** - Texas Compassionate Use Program (TCUP)
 - Expanded to 15 licenses
 - No more than 10mg in each dose administered by licensed physicians
 - **Added chronic pain, traumatic brain injury, inflammatory bowel disease, and terminal illness** (already approved - epilepsy; seizure disorder; multiple sclerosis; spasticity; amyotrophic lateral sclerosis; autism; cancer; incurable neurodegenerative disease; post-traumatic stress disorder)
- Governor issued **Executive Order** following Special Sessions

GOVERNOR'S EXECUTIVE ORDER

- TABC and DSHS begin rulemaking process:
 - Prohibit sale to minors
 - Increase Delta-9 testing requirements
 - Hemp manufacturers/retailers pay for enforcement costs
 - Standardize labeling requirements
 - Delegate enforcement to TABC
 - Determine evidence-based methods for testing and determining intoxication
 - Assessment to prevent unlawful sales from other states
- DPS to coordinate with all law enforcement to ensure enforcement of all unlawful sales and address violations consistently across the state

NOW AND IN THE FUTURE

- Local law enforcement responsibility
 - 2027 Legislative Session
-

Steve Dye

steve.dye@allentx.gov
